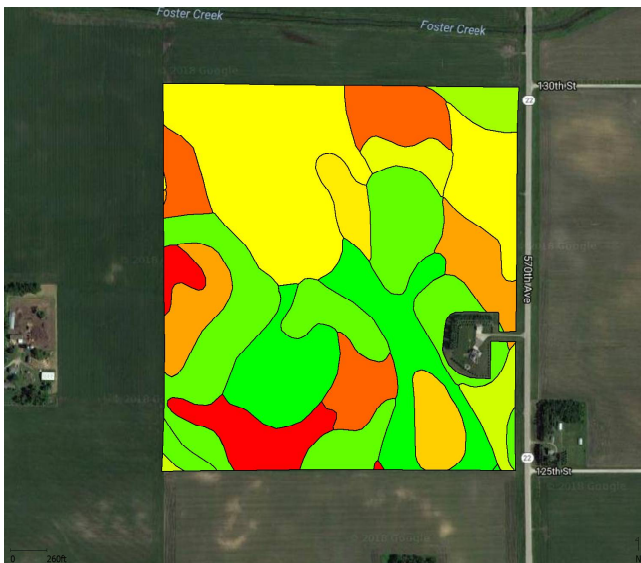


EXAMPLE 2.5 AC. GRID



Soil Type	
Canisteo	(24.0 ac - 15.5%)
Clarion	(36.8 ac - 23.8%)
Coland	(3.2 ac - 2.1%)
Delft	(3.7 ac - 2.4%)
Estherville	(3.3 ac - 2.1%)
Fieldon	(39.9 ac - 25.8%)
Fostoria	(3.6 ac - 2.3%)
Muskego	(4.7 ac - 3.1%)
Nicollet	(11.5 ac - 7.4%)
Ocheyedan	(14.9 ac - 9.6%)
Webster	(9.1 ac - 5.9%)



EXAMPLE GROWER
 EXAMPLE 2.5 AC. GRID
 Washington 25 NW1/4

