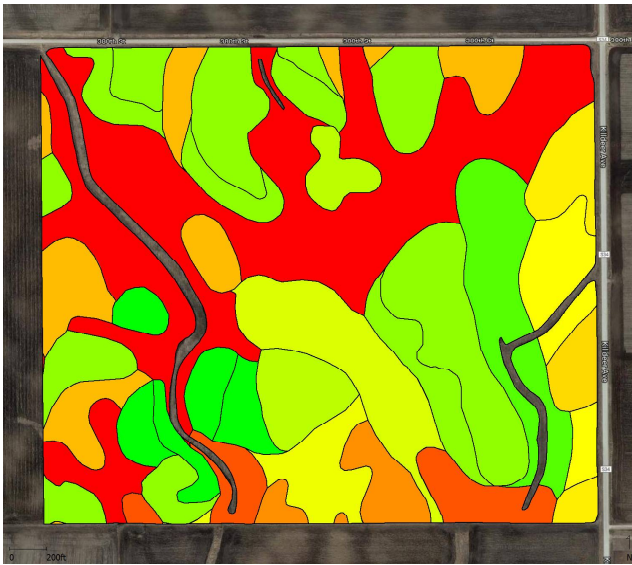


EXAMPLE ZONE 2



Soil Type	
Angus	(9.3 ac - 5.4%)
Canisteo	(11.1 ac - 6.5%)
Clarion	(39.8 ac - 23.2%)
Flagler	(7.0 ac - 4.1%)
Harcot	(10.7 ac - 6.2%)
Lawler	(5.0 ac - 2.9%)
Maxcreek	(6.6 ac - 3.8%)
Merton	(4.9 ac - 2.8%)
Moland	(2.4 ac - 1.4%)
Nicollet	(14.3 ac - 8.3%)
Saude	(4.3 ac - 2.5%)
Talcot	(6.8 ac - 3.9%)
Webster	(49.6 ac - 28.9%)



EXAMPLE GROWER
EXAMPLE ZONE 2
Washington 3 SE1/4

